



REF: # 9193



INFO

PRICE: 595.000 €

PROPERTY TYPE: Villa

LOCATION:

BEDROOMS: 3

Bathrooms: 2

Build: 153 (m2)

Plot: 409 (m2)

Terrace: -

Year: -

Floor: -

Old price -



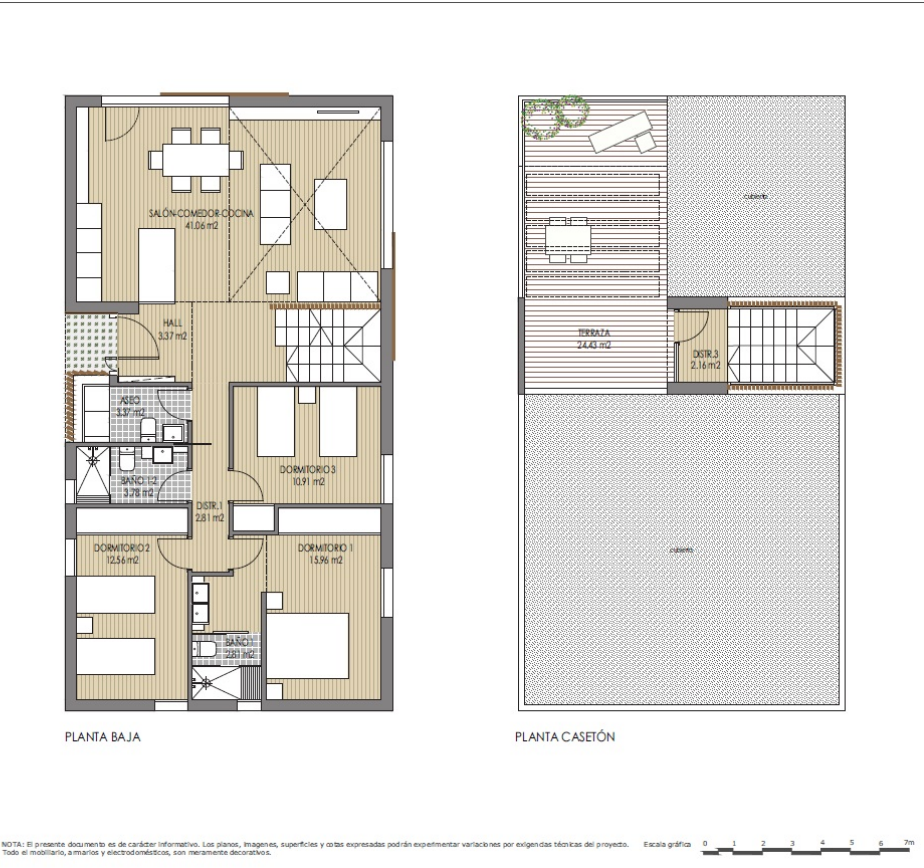
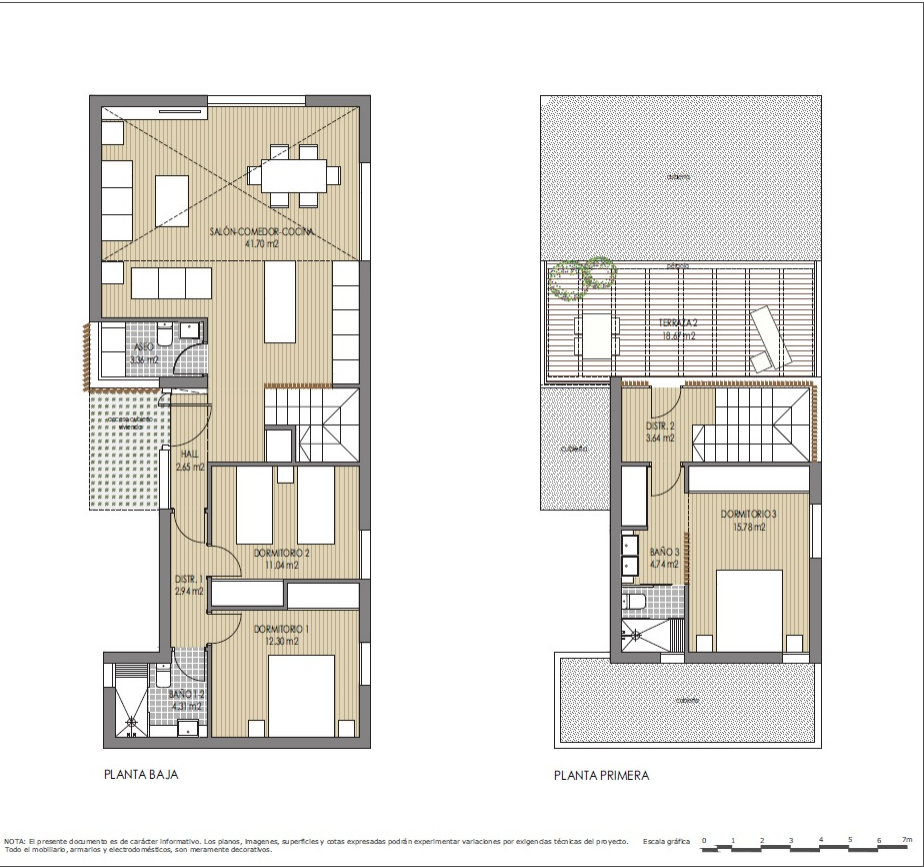
DESCRIPTION

Magnificent newly built villas in Sierra Cortina. With plots from 409 m2 and homes from 153m2 built, the property is distributed in 3 bedrooms, 2 bathrooms, living room, open kitchen and solarium terrace. They are distributed on the ground floor or on the ground floor and first floor, according to typology. The houses have a private pool, beautiful gardens and parking area. Check prices and availability.











TIPOLOGIA

TIPO E

PLANTAS BAJA Y PRIMERA

SUPERFICIES DE VIVIENDA

| | P.BAJA | P.PRIMERA | TOTAL |
|--------------------|-----------|-----------|-----------|
| SUP. ÚTIL CERRADA | 81.89 m² | 25.39 m² | 107.28 m² |
| SUP. ÚTIL ABIERTA | 0.00 m² | 23.73 m² | 23.73 m² |
| SUP. ÚTIL TOTAL | | | 131.01 m² |
| SUP. CONS. CERRADA | 102.54 m² | 34.99 m² | 137.53 m² |
| SUP. CONS. ABIERTA | 5.01 m² | 25.67 m² | 30.68 m² |
| SUP. CONS. TOTAL | | | 168.21 m² |

SUPERFICIES DE PARCELA

| PARCELA | 1 | 2 | 3 | 4 | 5 | 6 | 7 | 8 | 9 |
|-------------------|--------|--------|--------|--------|--------|--------|--------|--------|--------|
| SUP. m2 | 459.00 | 409.43 | 409.43 | 409.43 | 409.43 | 409.43 | 409.43 | 409.43 | 533.40 |
| SUP. m2 predomino | 226.54 | 203.84 | 203.34 | 204.93 | 210.61 | 218.31 | 198.58 | 222.42 | 437.94 |

ESQUEMA DE VIVIENDAS

PARCELA 1 TIPO A

PARCELA 2 TIPO B

PARCELA 3 TIPO C

PARCELA 4 TIPO B

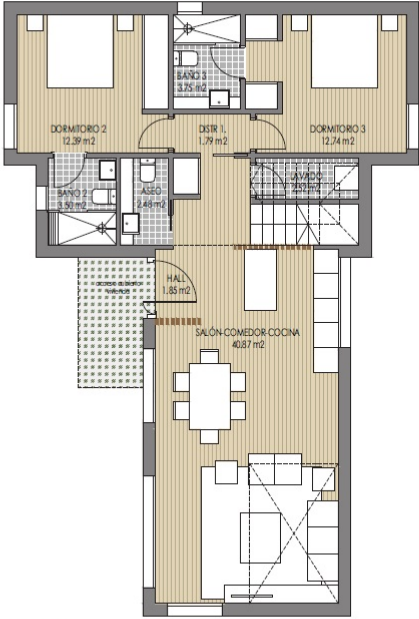
PARCELA 5 TIPO D

PARCELA 6 TIPO D

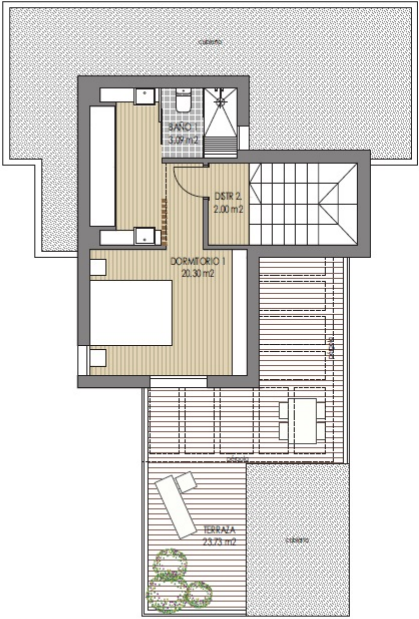
PARCELA 7 TIPO D

PARCELA 8 TIPO D

PARCELA 9 TIPO E



PLANTA BAJA



PLANTA PRIMERA

NOTA: El presente documento es de carácter informativo. Los planos, imágenes, superficies y cotas expresadas podrán experimentar variaciones por exigencias técnicas del proyecto. Escala gráfica: 0 1 2 3 4 5 6 7m

"Experience our experience - Because you deserve the best"